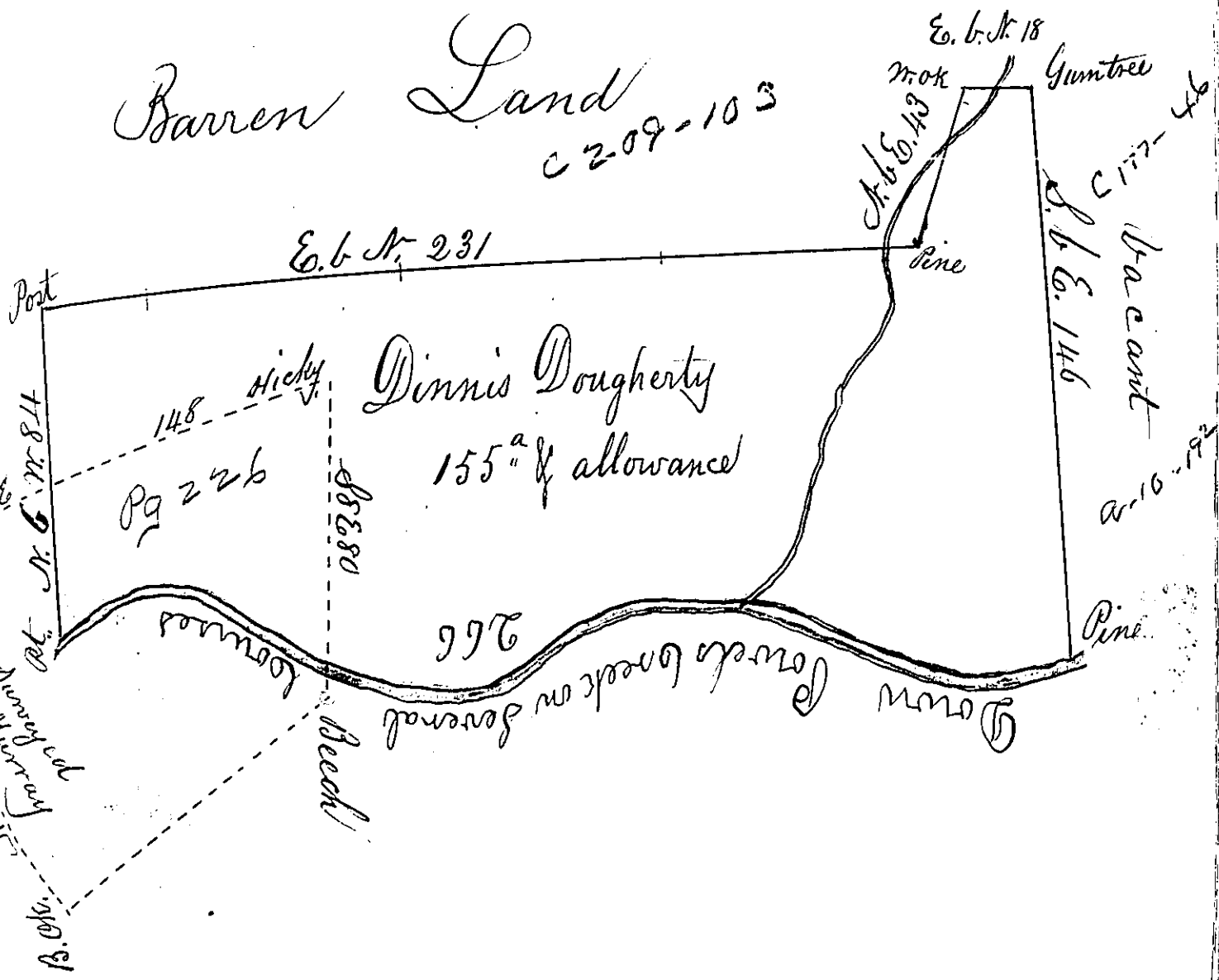


Barren Land

C 209-103

Land said to be warranted before the first of Decr 1768
Land surveyed by Murray Michl: Dills



Timothy Meadow Surveyed for Dinnis Dougherty on the 19th day of May 1768 Containing one hundred fifty five acres & the usual allowance of six p, lot, Situate on Powels Creek, over the Blue Mountains in Lancaster County, By Application of the 13th day of August 1767.

No. 2792
 To Wm. Lukens Esq^r Suror^r Gen^l P Bartram Galbraith D. S.

IN TESTIMONY that the above is a copy of the original remaining on file in the Department of Internal Affairs of Pennsylvania, made conformably to an Act of Assembly approved the 16th day of February, 1833, I have hereunto set my Hand and caused the Seal of said Department to be affixed at Harrisburg, this

Twenty ninth day of February 1834,
 J. Simpson Africa,
 Secretary of Internal Affairs